

INSTRUCTION TO CONTRACTOR

Project:	Seamans Center For the Engineering Arts And Sciences South Annex Addition	ITC No. :	ITC-144
Project No.:	0452001	Date:	12/27/2016
ITC Title:	ITC-144 Concrete opening trim	Status:	

The following instruction is issued to:

- ☒ Clarify contract documents and/or procedures
- ☐ Request a Change Authorization Request
- ☐ Transmit documents for incorporation into the contract, subject to the last paragraph below

ARCHITECTURE

1. Revise detail N8/A502 per attached drawing ITC-129.1. Due to unacceptable concrete openings, painted steel trim is being added at all door openings at Stair 5 and Stair 6. Provide paintable sealant at joint between steel plate trim and hollow metal door frame. Head detail at openings is similar to jamb detail.
2. Revise detail L15/A650 per attached drawing ITC-129.2. Due to unacceptable concrete openings the construction around the elevator door openings is being revised. Omit metal framing, plywood, painted gypsum board and painted steel plate to the room side of wall type M1 and replace it with painted steel trim and stainless steel wall panels. Stainless steel wall panel finish to match elevator door and frame and grain direction to be vertical.
3. Steel plate trim shall be welded on unexposed surfaces. Joint between horizontal steel members to be hairline. Fasten steel trim to concrete walls with concrete screws recessed below surface of plate. Fill recess with Bondo type filler to achieve smooth and even surface.

Copies of drawings or other documents are:

- ☒ Attached

If, in your opinion, this instruction involves work which either increases or decreases the contract amount or time you shall not proceed until you submit a change authorization request and receive owner approval to proceed with the work.

DOOR AND FRAME (081113)
 AIR MEMBRANE FLASHING
 (072726)
 PREFINISHED SHEET METAL AT
 FLASHING (076200)
 WINDOW SYSTEM - SEE FLOOR
 PLAN

EXPANSION JOINT TYPE 3 (079500)

3/16" STEEL PLATE

1/2" STEEL PLATE, PA4

DOOR AND FRAME (081113)

SEALANT - EACH SIDE OF
 FRAME

1/2" STEEL PLATE, PA4

3/16" STEEL PLATE, PA4

1/2" STEEL PLATE, PA4

3/16" STEEL PLATE, PA4

N8 PLAN DETAIL

1 1/2" = 1'-0" RE: A5/A113

All door openings at Stair 5
 and Stair 6 shall receive
 painted steel trim as shown.

UNIVERSITY OF IOWA
 BNIM berkebile nelson immenschuh mcdowell architects

SEAMANS CENTER FOR THE ENGINEERING
 ARTS AND SCIENCES - SOUTH ANNEX ADDITION

UI: 0452001 BNIM: 13002.01

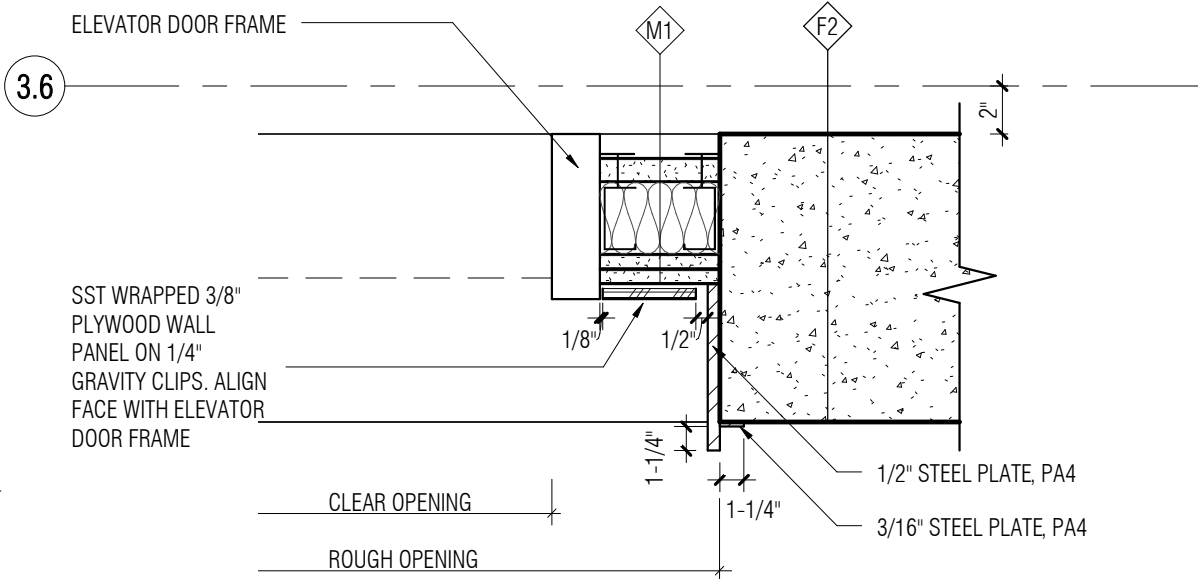
317 6th Ave, Suite 100 Des Moines IA 50309 515.974.6462

CHARLES SAUL ENGINEERING - STRUCTURAL
 DESIGN ENGINEERS - MEP

SHIVE HATTERY, INC. - CIVIL
 THE SEXTANT GROUP, INC. - A/V DESIGN

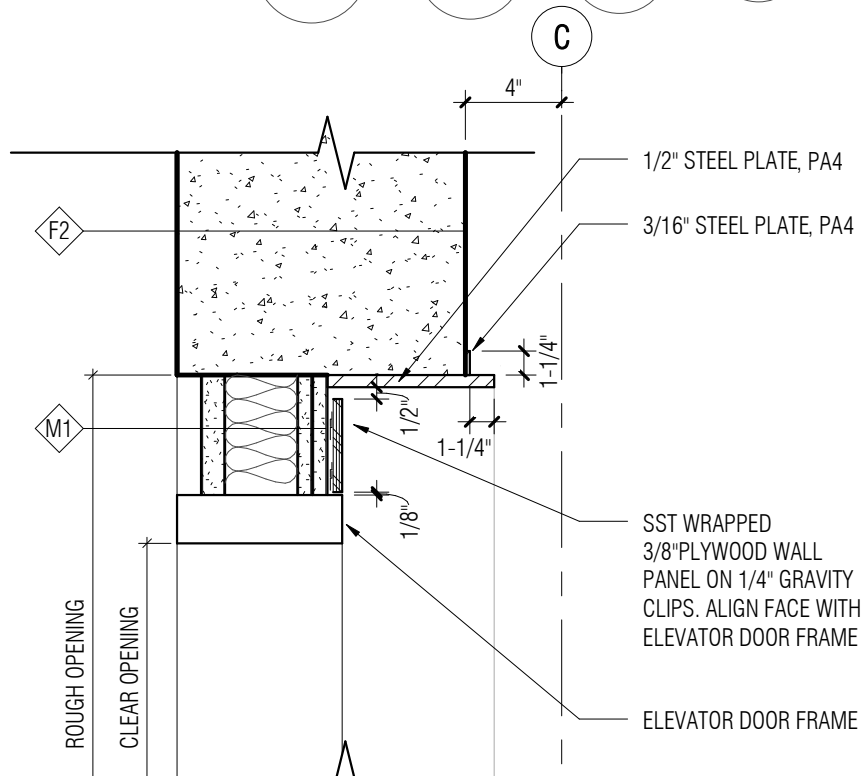
Date: 12/27/2016
 Issued:
 Reference Drawing: A502

ITC-144.1



L15 PLAN DETAIL

1 1/2" = 1'-0" RE: A5/A111



1 SECTION - ELEVATOR DOOR HEAD

1 1/2" = 1'-0" RE: 1/2A

UNIVERSITY OF IOWA
BNIM berkebile nelson immenschuh mcdowell architects

SEAMANS CENTER FOR THE ENGINEERING
ARTS AND SCIENCES - SOUTH ANNEX ADDITION

UI: 0452001 BNIM: 13002.01

317 6th Ave, Suite 100 Des Moines IA 50309 515.974.6462

CHARLES SAUL ENGINEERING - STRUCTURAL
DESIGN ENGINEERS - MEP

SHIVE HATTERY, INC. - CIVIL
THE SEXTANT GROUP, INC. - A/V DESIGN

Date: 12/27/2016
Issued:
Reference Drawing: A650

ITC-144.2